

TITAN-F 1000 A/XL

Technical data

Internal chamber dimensions	1015 x 805 x 210/280 mm*
External dimensions	1330 x 1170 x 1100 mm*
Seal length	600 / 680 / 980 mm
Vacuum pump	160, 250 oder 300 m ³ /h
Weight	ca. 380 / 450 kg
Power Supply	3 Phasen, 230 / 400 V, 50 Hz**

* width x depth x height
 ** special voltages upon request



Seal welding system



Quantity and position of the welding bars according to individual agreement.

BOSS quality characteristics



Longevity

BOSS vacuum machines are made exclusively with high-quality individual components: rust-free stainless steel, splashproof elements and Busch high-performance pumps - 100% Made in Germany. Clear structure, robust technology and sophisticated design guarantee long-lasting operational readiness.



User-friendliness

Our intuitive Z 3000 sensor control system permits simple and precise setting of important operating parameters. Pre-set values can be recalled via the memory function. The well-thought-out and ergonomic construction of the machines permits user-friendly working and guarantees optimum packaging results.



Seal welding

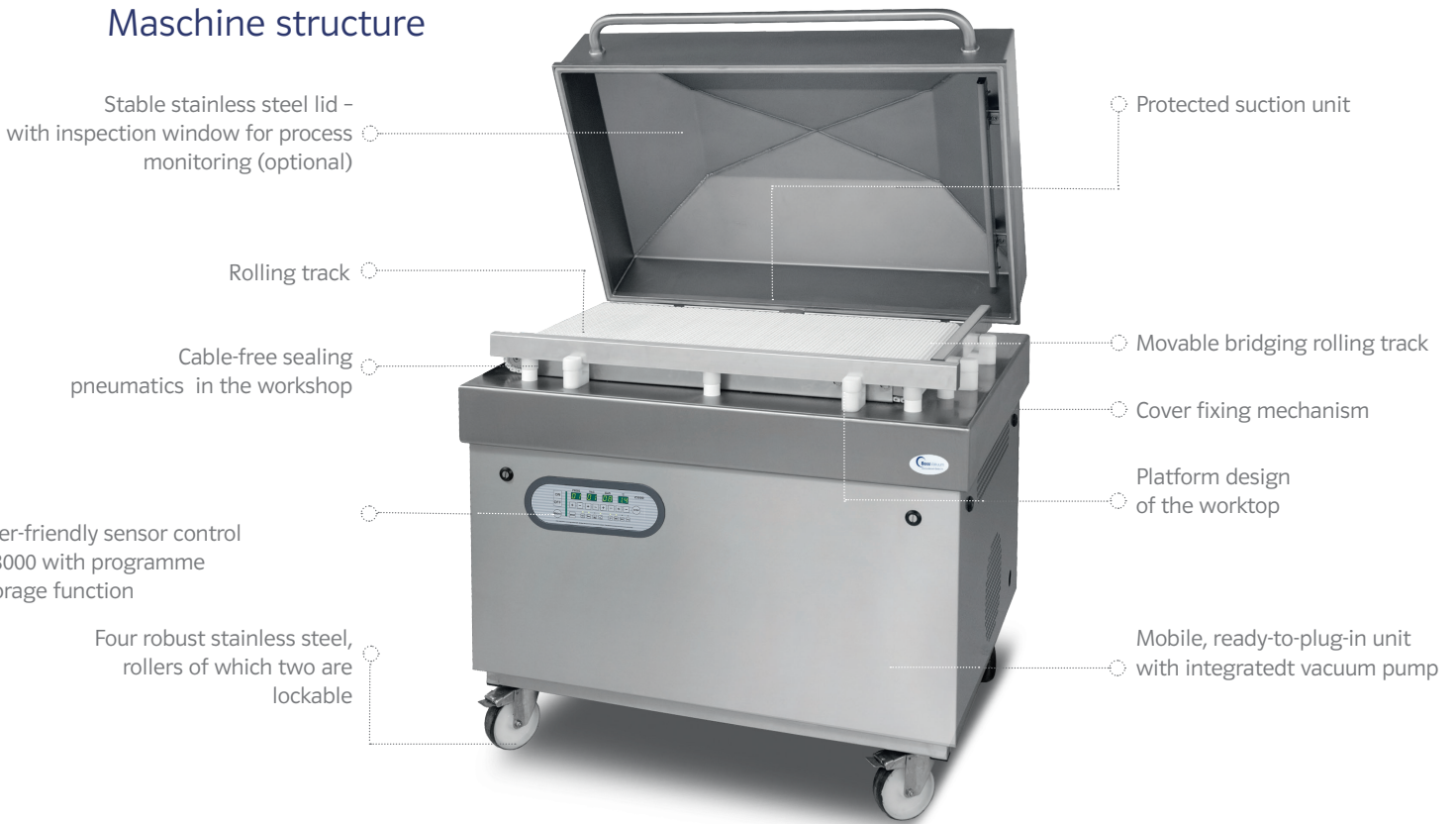
The perfect synergy of contact pressure, seal welding temperature and seal welding time produces optimum fusing results. Our high-pressure sealing systems ensure consistent sealing results even with thicker types of bag. The machine can be equipped with cut-off seal welding in order to avoid unnecessary bacterial exposure.



Service & Cleaning

Ease of cleaning is foremost in the design of our machines. The platform design of the vacuum chamber and cable-free pressure systems make cleaning the working surface easy. Individual components are easily accessible and arranged clearly. A service programme supports the functionality of the vacuum pump.

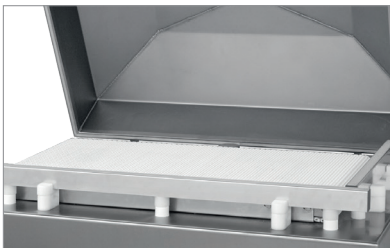
Maschine structure



Lid and chamber

The stable platform design of the stainless steel work table guarantees optimum ease of cleaning. The lid is made of high-quality stainless steel.

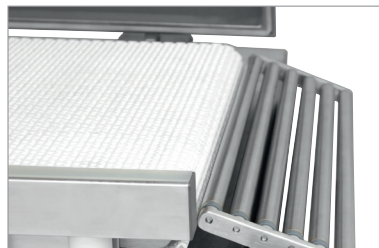
Chamber



Benefits

- Avoidance of dirt-sensitive welding seams
- The easy-to-clean platform design is suitable for industrial applications
- Removable welding and degassing unit

Automatic rolling track



Benefits

- Automatic transport belt that is manually adjustable for height
- Easy installation and dismantling for optimal cleaning conditions
- Effective height above the transport belt up to 210
- Manual stainless steel roller track possible (optional)

Stainless steel lid



Benefits

- Ergonomic lid management
- Various heights available
- Silicone lip seal for smooth lid closure
- Easy-clean seal welding system - installation in lid
- Seal welding systems easy to uninstall

Control system

Control system Z 3000

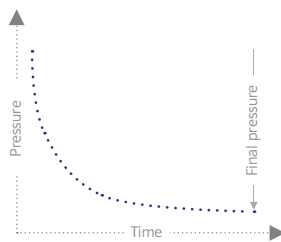
Our Z 3000 sensor control is equipped with a precision vacuum sensor and permits precise setting of important operating parameters. Vacuum, gas and sealing.



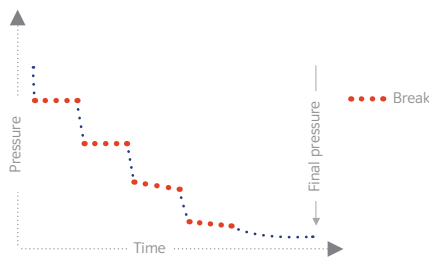
Benefits

- User-friendliness
- 99-programme memory
- Clear depiction of individual parameters
- Break function for immediate process cancellation
- H2O sensor for automatic packaging of liquid products flexibly adjustable according to customer requirements
- Quick-stop function for packaging liquids
- Incremental vacuum function for slowly degassing products
- Cyclic vacuum permits multiple flushing of the bag
- Red Meat programme for shrink bag packaging
- Continuous running - service programme for automatically cleaning the vacuum pump
- Separately adjustable cut-off welding systems
- Splashproof design
- Soft-air function for gentle back ventilation (optional)
- Individual setting of cooling, pressing on and back ventilation times
- Operating hours counter for monitoring service intervals

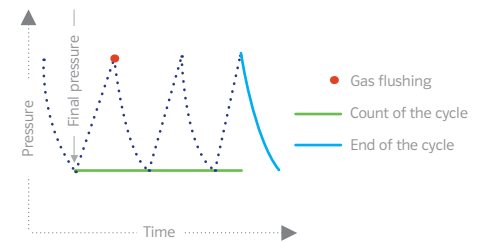
Final pressure evacuation with auto-stop function



Incremental vacuum

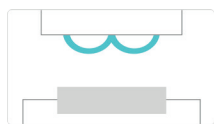
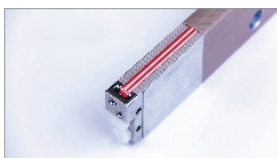


Cyclic vacuum

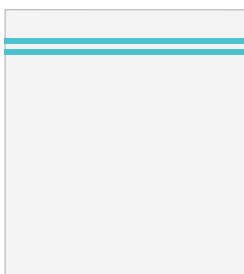


Welding systems

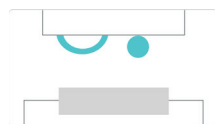
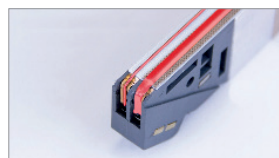
Double seam weld



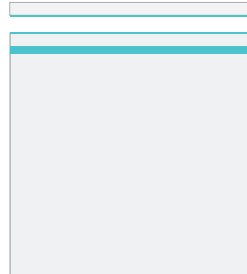
Double flat wire: 6 x 0,3 mm



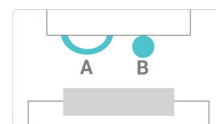
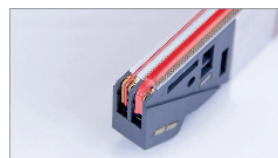
Simple-cut off seal weld



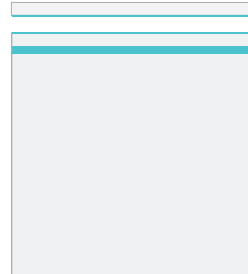
Round wire: 1,2 mm Ø
Flat wire: 4 x 0,2 mm



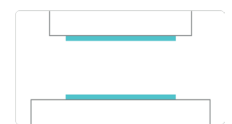
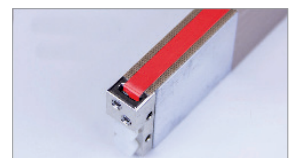
Separately adjustable cut-off weld



Round wire: 1,2 mm Ø
Flat wire: 4 x 0,2 mm



Over-/under seal weld

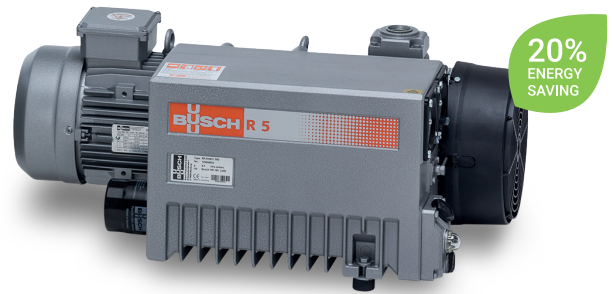


Flat wire above: 8 x 0,2 mm
Flat wire below: 6 x 0,2 mm



BUSCH vacuum pump

Our BOSS vacuum packaging machines are fitted with powerful oil-driven rotary disc vacuum pumps made by the Busch Company.



Benefits

- Reduction of oxygen content by up to max. 0.1%
- Constant high vacuum level
- Optimum conservation of moisture-sensitive and/or oxygen-sensitive products
- Long-term replacement part guarantee
- Service-friendly design
- Technically mature, long-life technology
- Made in Germany
- Gas ballast valve for the evacuation of larger quantities of steam

Technical data

	160 m ³ /h	250 m ³ /h	300 m ³ /h
Nominal pumping speed	160 m ³ /h	250 m ³ /h	300 m ³ /h
Ultimate pressure (mBar)	0,1	0,1	0,1
Nominal motor rating (kW)*	~ 4	~ 5,5	~ 7,5
Nominal motor speed (U/min)	1500	1500	1500
Noise level (ISO 2151) (dB)	70	72	74
Oil capacity (liter)	5	6,5	6,5

* depends on the voltage supply

Accessories

1. Gassing unit with long stainless steel nozzles (5 nozzles per bar)
2. Simple cut-off seal weld
3. Separately adjustable cut-off weld
4. Over-/ under seal weld (not possible in combination with separately adjustable cut-off weld)
5. Soft ventilation
6. Lid inspection window
7. Higher performance vacuum pump 250 m³/h oder 300 m³/h; 3 phases, 230/400 V, 50 Hz
8. Lid automation
9. Movable bridging rolling track at the right side of the machine
10. External control unit positioned a lateral or a rear stainless steel arm
11. Lid-volume reduction (3 specially shaped insertion plates with stainless steel fastenings)
12. Set of wearing parts (teflon, wire, lid gasket, silicone for pressure bar)
13. Packaging (stable cardboard box on wooden pallet)

